



### ELECTRIC CHARACTERISTICS

Nominal voltage	0/600 V <sub>Ac</sub> - 50/60 Hz
Phase to phase test voltage	2400 V <sub>Dc</sub> (2 s)
Phase to ground test voltage	3200 V <sub>Dc</sub> (2 s)
Climatic class	- 40 / +85 °C

RoHS

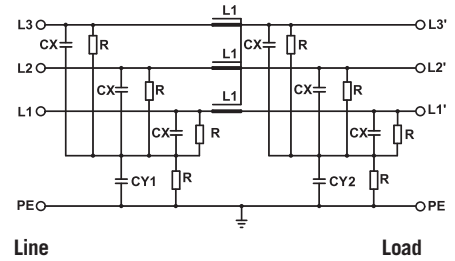
UL1283  
CSA C22.2  
E215863

FIN538S	Rated Current 40°C (50°C)	$\Sigma Cx$ ( $\mu F$ ) $\pm 5\%$	Cy1 (nF) $\pm 5\%$	Cy2 (nF) $\pm 5\%$	L1 (mH) $\pm 10\%$	Power Loss (W)
.007.M	8 (7)	20	1000	100	1.5	3
.016.M	18 (16)	20	1000	100	1.5	4
.030.M	34 (30)	20	1000	100	1.4	10
.042.M	47 (42)	20	1000	100	1.3	18
.055.M	60 (55)	20	1000	100	1.2	23
.075.M	83 (75)	60	1000	100	1.1	37
.100.M	110 (100)	60	1000	100	1.1	52
.130.M	142 (130)	60	1000	100	1	65
.180.M	200 (180)	60	1000	100	1	77

Total leakage current at 230 V phase to ground 50 Hz / 40°C

Nominal <10mA  
Worst condition <80mA

### ELECTRIC DIAGRAM



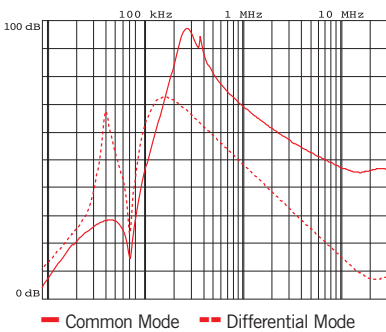
### MECHANICAL DIMENSIONS (mm)

FIN538S	A	B	V	V1	F	H	I	L	N	d	Weight Kg
.007.M	100	90	22	16	5.4	250	220	7.5	60	M6	1.3
.016.M	100	90	22	16	5.4	250	220	7.5	60	M6	1.3
.030.M	100	90	22	16	5.4	250	220	7.5	60	M6	1.3
.042.M	100	90	22	35	5.4	250	220	7.5	60	M6	1.5
.055.M	100	90	22	35	5.4	250	220	7.5	60	M6	1.7
.075.M	135	85	22	39	6.5	270	240	7.5	60	M6	2.2
.100.M	155	90	24	43	6.5	270	240	7.5	65	M10	3.2
.130.M	155	90	24	43	6.5	270	240	7.5	65	M10	3.2
.180.M	170	125	26	51	6.5	380	350	7.5	102	M10	5.1

### CONNECTION

Rigid Cable (mm <sup>2</sup> )	Flexible Cable (mm <sup>2</sup> )	Torque (Nm)
0.2 - 10	0.2 - 6	1.2
0.2 - 10	0.2 - 6	1.2
0.2 - 10	0.2 - 6	1.2
0.5 - 16	0.5 - 10	1.8
0.5 - 16	0.5 - 10	1.8
4 - 25	6 - 35	4.5
10 - 50	10 - 50	4
10 - 50	10 - 50	4
35 - 95	35 - 95	20

### TYPICAL ATTENUATION



### CASE

