



### ELECTRIC CHARACTERISTICS

Nominal voltage	0/600 V <sub>Ac</sub> - 50/60 Hz
Phase to phase test voltage	2400 V <sub>Dc</sub> (2 s)
Phase to ground test voltage	3200 V <sub>Dc</sub> (2 s)
Climatic class	- 40 / +85 °C

RoHS

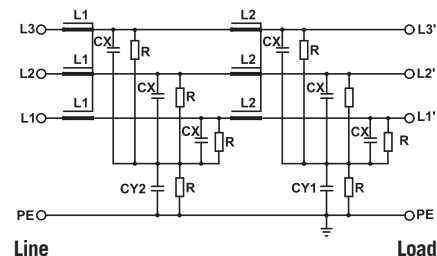
UL1283  
CSA C22.2  
E215863

FIN1900 FIN1900G	Rated Current 40°C (50°C)	ΣCx (μF) ± 5%	Cy1 (nF) ± 5%	Cy2 (nF) ± 5%	L1 (mH) ± 10%	L2 (mH) ± 10%	Power Loss (W)
.006.M	8 (6)	20	1000	100	1.5	1.5	8
.012.M	14 (12)	20	1000	100	1.5	1.5	10
.016.M	18 (16)	60	1000	100	1.4	1.4	12
.025.M	28 (25)	60	1000	100	1.3	1.3	15
.032.M	35 (32)	60	1000	100	1.2	1.2	23
.042.M	50 (42)	60	1000	100	1.1	1.1	32
.055.M	63 (55)	60	1000	100	1.1	1.1	37
.070.M	80 (70)	60	1000	100	1	1	52
.080.M	90 (80)	60	1000	100	1	1	60
.100.M	110 (100)	60	1000	100	0.9	0.9	92
.115.M	130 (115)	60	1000	100	0.8	0.8	101
.150.M	175 (150)	60	1000	100	0.7	0.7	115
.200.M	230 (200)	60	1000	100	0.6	0.6	120

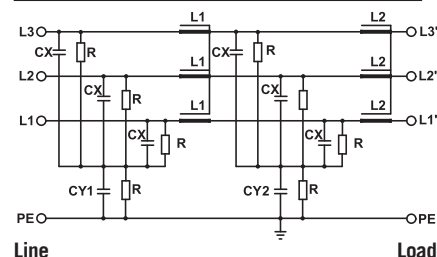
Total leakage current at 230 V phase to ground 50 Hz / 40°C

Nominal <10mA  
Worst condition <80mA

### FIN1900 ELECTRIC DIAGRAM



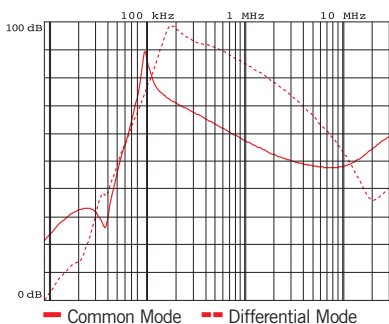
### FIN1900G ELECTRIC DIAGRAM



### MECHANICAL DIMENSIONS (mm)

FIN1900 FIN1900G	A	B	V	V1	F	H	I	L	N	d	Weight Kg
.006.M	140	50	19	15	6	226	200	7	28	M6	1.7
.012.M	140	50	19	15	6	226	200	7	28	M6	1.7
.016.M	177	60	19	15	6	267	237	8	34	M6	1.7
.025.M	177	60	19	15	6	267	237	8	34	M6	2.3
.032.M	177	60	19	15	6	267	237	8	34	M6	2.3
.042.M	177	70	19	25	6	295	265	8	44	M6	3.4
.055.M	177	70	19	33	6	295	265	8	44	M6	3.5
.070.M	205	80	28	38	8	390	340	12	53	M10	6
.080.M	205	80	28	38	8	390	340	12	53	M10	6
.100.M	205	80	28	43	8	390	340	12	53	M10	7.1
.115.M	205	80	28	43	8	390	340	12	53	M10	7.1
.150.M	220	105	28	50	8	420	370	12	78	M10	8.5
.200.M	220	105	28	50	8	420	370	12	78	M10	8.5

### TYPICAL ATTENUATION



### CONNECTION

Rigid Cable (mm <sup>2</sup> )	Flexible Cable (mm <sup>2</sup> )	Torque (Nm)
0.2 - 10	0.2 - 6	1.2
0.2 - 10	0.2 - 6	1.2
0.2 - 10	0.2 - 6	1.2
0.2 - 10	0.2 - 6	1.2
0.2 - 10	0.2 - 6	1.2
0.5 - 16	0.5 - 10	1.8
0.5 - 16	0.5 - 10	1.8
4 - 25	6 - 35	4.5
4 - 25	6 - 35	4.5
10 - 50	10 - 50	4
10 - 50	10 - 50	4
35 - 95	35 - 95	20
35 - 95	35 - 95	20

### CASE

