



### ELECTRIC CHARACTERISTICS

Nominal voltage	0/250 V <sub>Ac</sub> - 50/60 Hz
Phase to phase test voltage	1750 V <sub>Dc</sub> (2 s)
Phase to ground test voltage	2150 V <sub>Dc</sub> (2 s)
Climatic class	- 40 / +85 °C

RoHS

UL1283  
CSA C22.2  
E215863

FIN27	Rated Current 40°C	ΣCx (nF) ± 5%	Cy1 (nF) ± 5%	L1 (mH) ± 10%	L2 (mH) ± 10%	Power Loss (W)
.003.M	3	136	22	2.2	2.2	1.5
.006.M	6	136	22	2.2	2.2	2.1
.010.M	10	136	22	2.1	2.1	2.8
.016.M	16	136	22	2.1	2.1	3.2
.020.M	20	136	22	2.0	2.0	4

Leakage current at 230 V phase to ground- 50 Hz / 40°C < 1mA

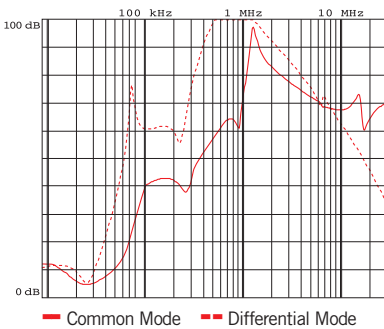
### MECHANICAL DIMENSIONS (mm)

FIN27	A	B	H	N	Weight Kg	Case
.003.M	65	85	39	11	0.320	1
.006.M	65	85	39	11	0.320	1
.010.M	65	85	39	11	0.320	1
.016.M	65	85	39	11	0.320	1
.020.M	65	85	39	11	0.320	1

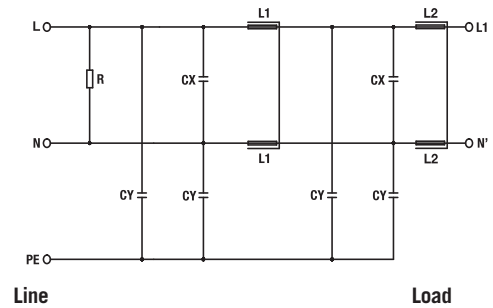
### CONNECTION

Rigid Cable (mm <sup>2</sup> )	Flexible Cable (mm <sup>2</sup> )	Torque (Nm)
0.2 - 6	0.2 - 4	0.8
0.2 - 6	0.2 - 4	0.8
0.2 - 6	0.2 - 4	0.8
0.2 - 6	0.5 - 4	0.8
0.2 - 6	0.5 - 4	0.8

### TYPICAL ATTENUATION



### ELECTRIC DIAGRAM



### CASE 1

