

# Inductive sensors.

Compact, fast, reliable.

Edition 2013



Inductive sensors  
by Baumer combine  
tried and tested  
technology  
and sophisticated  
innovations.

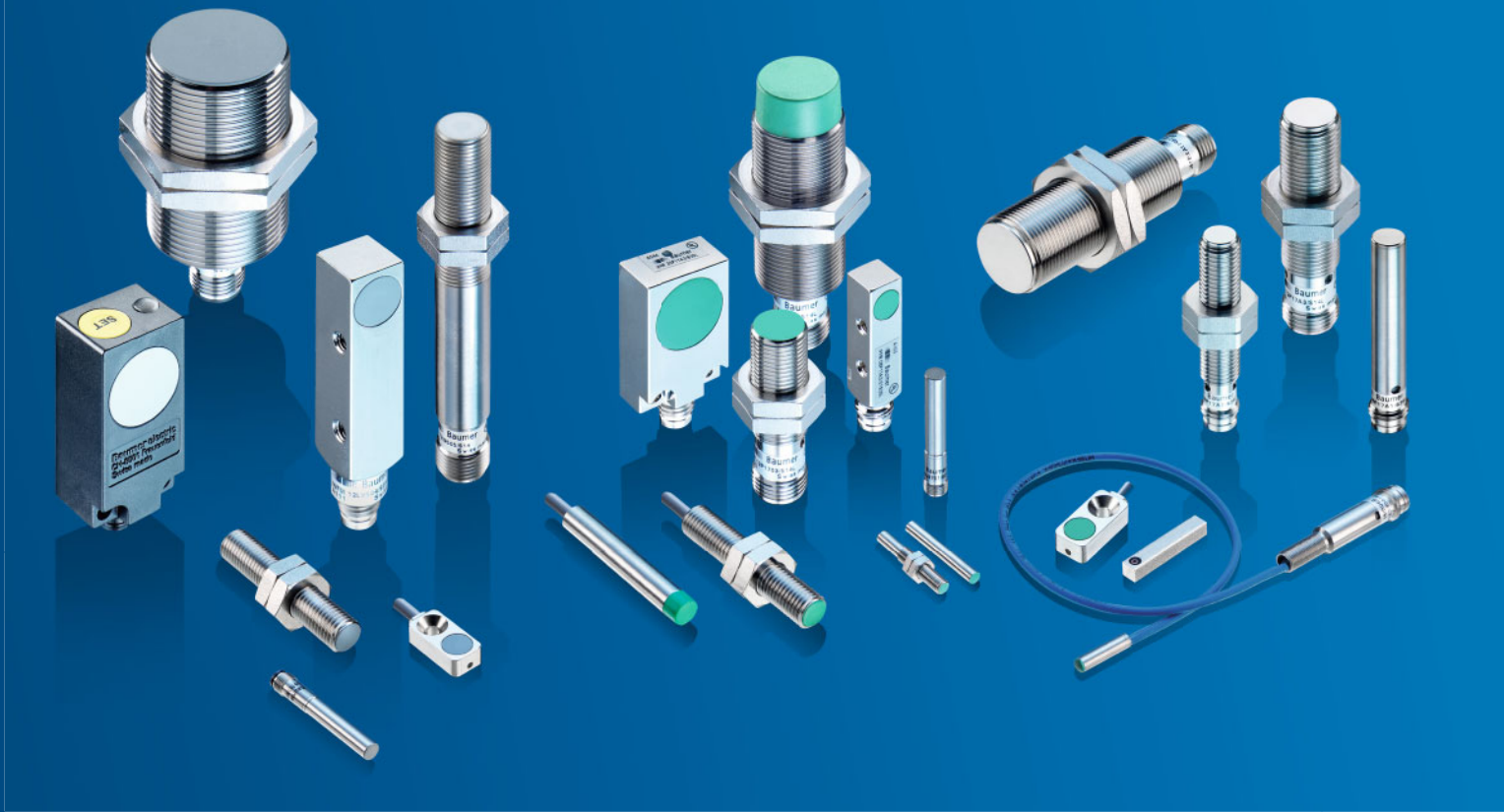
# Visibly better: Baumer sensors.

The Baumer Group is leading at international level in the development and production of sensors, shaft encoders, measuring instruments as well as components for automatic image processing. As an owner-managed family business, we employ about 2500 workers worldwide in 36 subsidiaries and 18 countries. With marked customer orientation, consistently high quality and vast innovation potential worldwide, Baumer develops specific solutions for many industries and applications.

## Our standards – your benefits.

- Passion coupled with expertise – both have made us a sensor pioneer and technology leader
- Our range of services is hard to beat – we have the right product, developed by our own team, for every task
- Inspiring through innovation – a challenge Baumer employees take on every day
- Reliability, precision and quality – our customers' requirements are what drives us
- Partnership from the start – together with our customers we develop suitable solutions
- Always a step ahead – thanks to our production depth, our flexibility and our delivery reliability
- Available worldwide – Baumer is Baumer everywhere





# Indispensable in all machines

Non-contacting, inductive proximity sensors play a major role in automation technology all over the world. For several decades millions of them have been used for monitoring the presence, movement and position of metal machine parts, valves, and gears. They feature the mostly stringently tested and most proven technology on the market. This is a key success factor which will enable them to provide reliable solutions for many demanding automation tasks tomorrow.

Inductive sensors operate very reliably even under the harshest industrial conditions like high pressure and above-normal temperatures. In high-speed applications too, the sensors stand out due to their precise switching points.

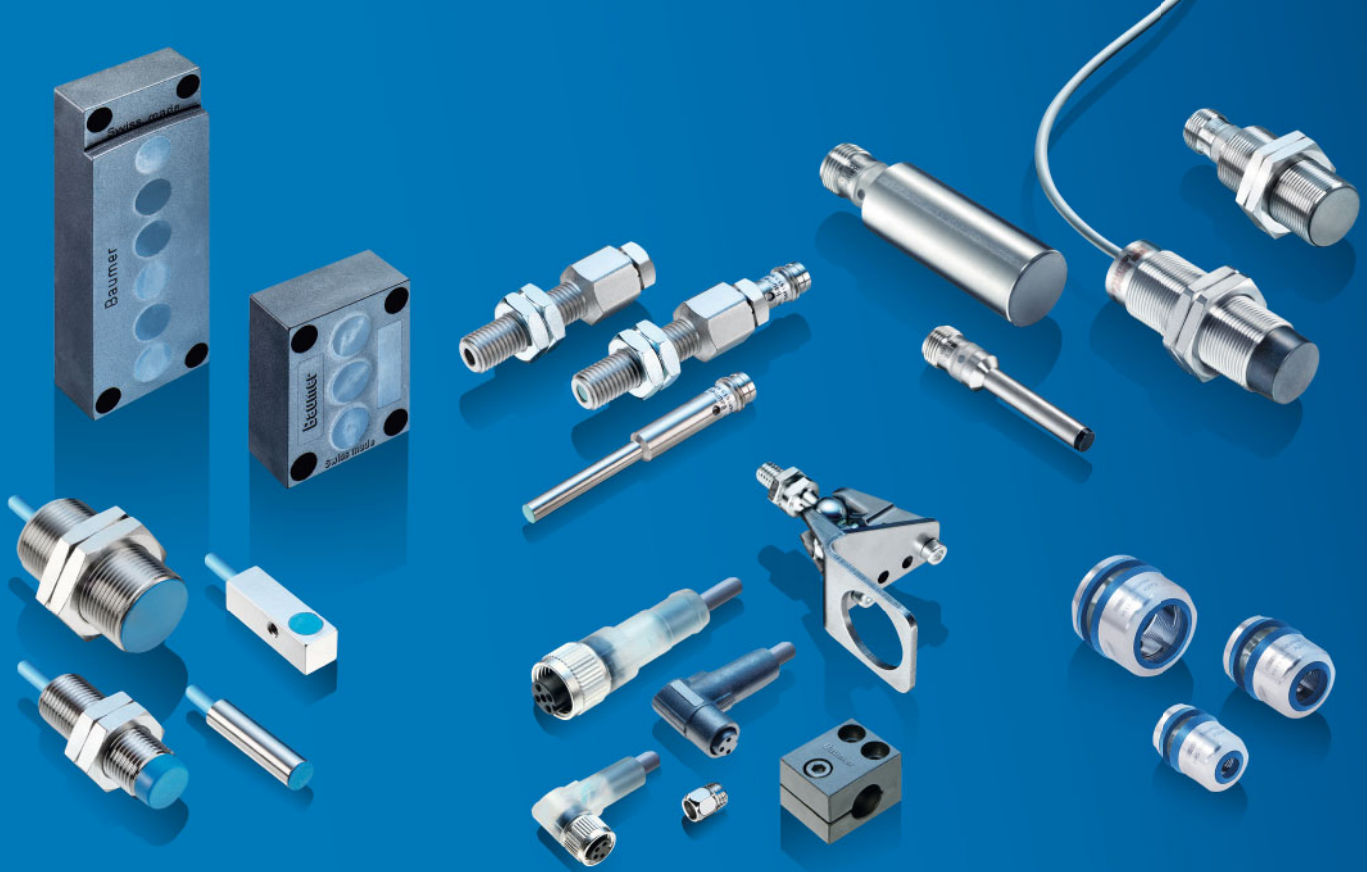
They can basically be divided into two groups:

- Sensors with digital outputs for presence detection or object counting
- Measuring sensors with analog outputs for determination of object distance

Both groups are available in sub-miniature housings to large-scale designs with a measuring distance of 15 mm.



Learn more.  
Downloadable data sheets as well as further information  
about our products is available at:  
[www.baumer.com/inductive](http://www.baumer.com/inductive)

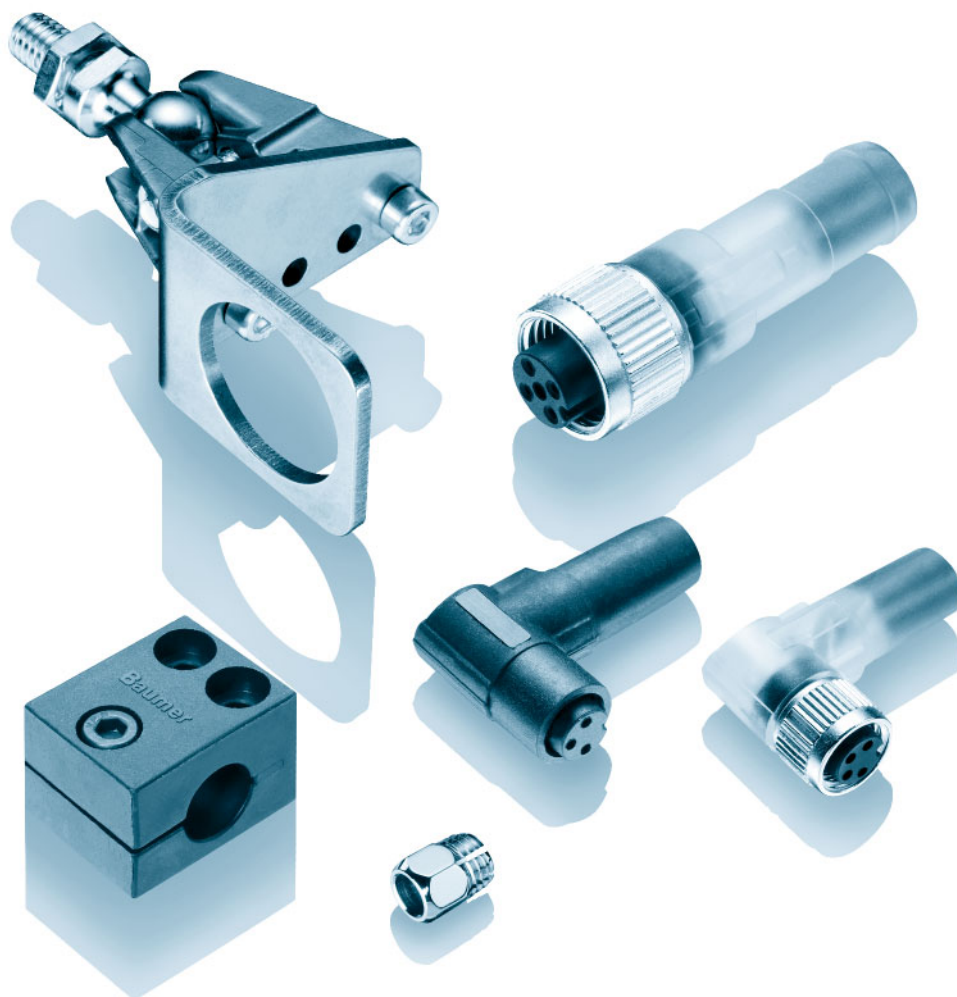


# Table of contents.

<b>Introduction</b>		<b>Industry and application solutions</b>	
Inductive distance measuring sensors <i>AlphaProx</i>	8	Table of contents	129
Inductive sensors in miniature design	10	Overview	130
Sensors with increased sensing distance <i>GammaProx</i>	12	Inductive sensors in hygienic design	134
Robust sensor solutions for the food and beverage industry	14	Inductive sensors in washdown design	139
Sensor solutions for demanding indoor and outdoor applications	16	Inductive sensors in outdoor design	144
Function and definitions	18	Sensors with full metal housings <i>DuroProx</i>	150
<hr/>		ATEX/NAMUR sensors	154
<b>Inductive distance measuring sensors <i>AlphaProx</i></b>		Sensors immune to welding and magnetic noise	164
Table of contents	27	High pressure sensors	165
Overview	28	High temperature sensors	167
Function and applications	32	Inductive code readers	172
Dynamic and static resolution	33	Sensors with banking screw	174
Linearization of the output curve	34	<hr/>	
Teach-in functions	35	<b>Accessories</b>	
Cylindrical designs	36	Table of contents	177
Rectangular designs	52	Connectors and mating connectors	178
<hr/>		Connectors/Pin assignment	186
<b>Inductive sensors – Standard solutions</b>		Installation dimensions	187
Table of contents	61	Mounting accessories	188
Overview	62	Mounting kits <i>SENSOFIX</i>	191
Cylindrical designs	68	<hr/>	
Rectangular designs	117	<b>Quick reference list</b>	192



## Accessories



Connectors and mating connectors

Page 178

Connectors/Pin assignment

Page 186

Installation dimensions

Page 187

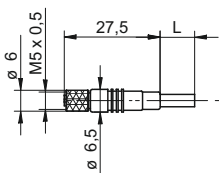
Mounting accessories

Page 188

Mounting kits *SENSOFIX*

Page 191

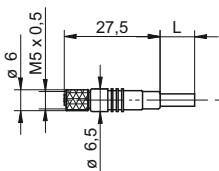
**ESG 05** - Connector M5 straight



order reference	
ESG 05SP0200	Connector M5, 3 pin, straight, 2 m
ESG 05SP0500	Connector M5, 3 pin, straight, 5 m
ESG 05SP1000	Connector M5, 3 pin, straight, 10 m

- Connector unshielded
- Miniature version
- Cable coating PUR

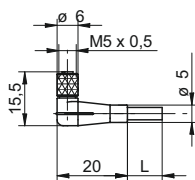
**ESG 05G** - Connector M5 straight, shielded



order reference	
ESG 05AP0200G	Connector M5, 4 pin, straight, 2 m, shielded

- Connector shielded
- Miniature version
- Cable coating PUR

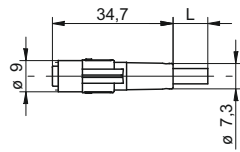
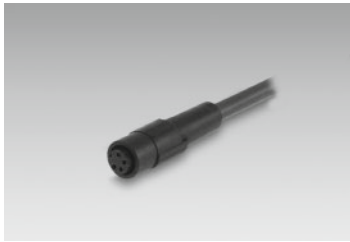
**ESW 05** - Connector M5 angular



order reference	
ESW 05SP0200	Connector M5, 3 pin, angular, 2 m
ESW 05SP0500	Connector M5, 3 pin, angular, 5 m

- Connector unshielded
- Miniature version
- Cable coating PUR

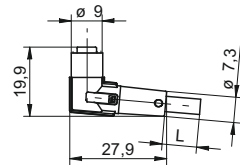
**ESG 09** - Connector Ø 8 mm straight, snap-in



order reference	
ESG 09SH0200	Connector clip fastener, 3 pin, straight, 2 m
ESG 09SH0500	Connector clip fastener, 3 pin, straight, 5 m
ESG 09SH1000	Connector clip fastener, 3 pin, straight, 10 m

- Connector unshielded "snap-in"
- 3 pin versions
- Cable coating PUR
- Halogen-free
- Suitable for flexible cable carriers
- UL listed, number E315836

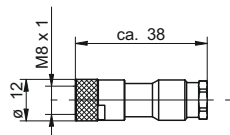
**ESW 08** - Connector Ø 8 mm angular, snap-in



order reference	
ESW 08SH0200	Connector clip fastener, 3 pin, straight, 2 m
ESW 08SH0500	Connector clip fastener, 3 pin, straight, 5 m

- Connector unshielded "snap-in"
- 3 pin versions
- Cable coating PUR
- Halogen-free
- Suitable for flexible cable carriers
- UL listed, number E315836

**ES 21** - Cable socket M8 straight, not pre-assembled

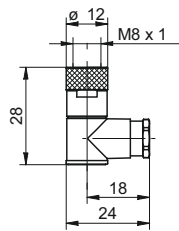


order reference	
ES 21	Connector M8, 3 pin, straight
ES 21A	Connector M8, 4 pin, straight

- Connector unshielded
- Connector only, no cable supplied
- 3 and 4 pin version



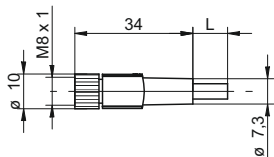
**ES 22** - Cable socket M8 angular, not pre-assembled



order reference	
ES 22	Connector M8, 3 pin, angular
ES 22A	Connector M8, 4 pin, angular

- Connector unshielded
- Connector only, no cable supplied
- 3 and 4 pin versions

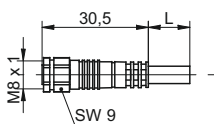
**ESG 32** - Connector M8 straight



order reference	
ESG 32AH0200	Connector M8, 4 pin, straight, 2 m
ESG 32AH0500	Connector M8, 4 pin, straight, 5 m
ESG 32AH1000	Connector M8, 4 pin, straight, 10 m
ESG 32SH0200	Connector M8, 3 pin, straight, 2 m
ESG 32SH0500	Connector M8, 3 pin, straight, 5 m
ESG 32SH1000	Connector M8, 3 pin, straight, 10 m

- Connector unshielded
- 3 and 4 pin versions
- Cable coating PUR
- Halogen-free
- Suitable for flexible cable carriers
- UL listed, number E315836

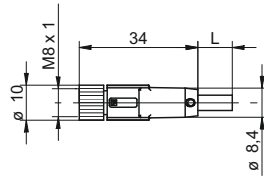
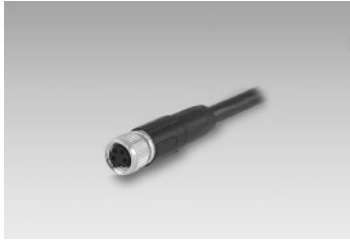
**ESG 32F** - Connector M8 straight, PVC/V4A



order reference	
ESG 32SF0500	Connector M8, 3 pin, straight, 5 m, V4A-PVC
ESG 32SF1000	Connector M8, 3 pin, straight, 10 m, V4A-PVC

- Connector unshielded
- 3 pin version
- Cable coating PVC
- Cap nut material in stainless steel V4A
- Suitable for flexible cable carriers

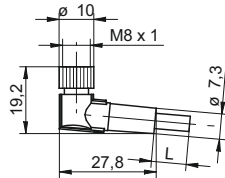
**ESG 32G** - Connector M8 straight, shielded



order reference	
ESG 32AH0200G	Connector M8, 4 pin, straight, 2 m, shielded
ESG 32AH0500G	Connector M8, 4 pin, straight, 5 m, shielded
ESG 32AH1000G	Connector M8, 4 pin, straight, 10 m, shielded
ESG 32SH0500G	Connector M8, 3 pin, straight, 5 m, shielded
ESG 32SH1000G	Connector M8, 3 pin, straight, 10 m, shielded

- Connector shielded, screen connected with cap nut
- 3 and 4 pin versions
- Cable coating PUR
- Halogen-free
- Suitable for flexible cable carriers
- UL listed, number E315836

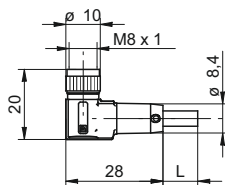
**ESW 31** - Connector M8 angular



order reference	
ESW 31AH0200	Connector M8, 4 pin, angular, 2 m
ESW 31AH0500	Connector M8, 4 pin, angular, 5 m
ESW 31AH1000	Connector M8, 4 pin, angular, 10 m
ESW 31SH0200	Connector M8, 3 pin, angular, 2 m
ESW 31SH0500	Connector M8, 3 pin, angular, 5 m
ESW 31SH1000	Connector M8, 3 pin, angular, 10 m

- Connector unshielded
- 3 and 4 pin versions
- Cable coating PUR
- Halogen-free
- Suitable for flexible cable carriers
- UL listed, number E315836

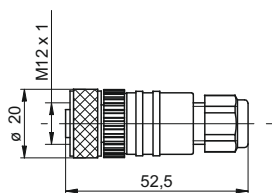
**ESW 31G** - Connector M8 angular, shielded



order reference	
ESW 31AH0200G	Connector M8, 4 pin, angular, 2 m, shielded
ESW 31AH0500G	Connector M8, 4 pin, angular, 5 m, shielded
ESW 31AH1000G	Connector M8, 4 pin, angular, 10 m, shielded
ESW 31SH0200G	Connector M8, 3 pin, angular, 2 m, shielded
ESW 31SH0500G	Connector M8, 3 pin, angular, 5 m, shielded

- Connector shielded, screen connected with cap nut
- 3 and 4 pin versions
- Cable coating PUR
- Halogen-free
- Suitable for flexible cable carriers
- UL listed, number E315836

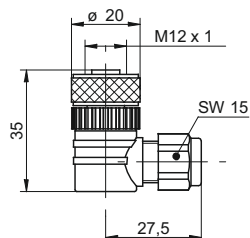
**ES 18** - Cable socket M12 straight, not pre-assembled



order reference	
ES 18 PG7	Connector M12, 4 pin, straight
ES 18C PG7	Connector M12, 5 pin, straight

- Connector unshielded
- Connector only, no cable supplied
- 4 and 5 pin versions

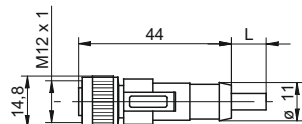
**ES 14** - Cable socket M12 angular, not pre-assembled



order reference	
ES 14 PG7	Connector M12, 4 pin, angular
ES 14C PG7	Connector M12, 5 pin, angular

- Connector unshielded
- Connector only, no cable supplied
- 4 and 5 pin versions

**ESG 34** - Connector M12 straight



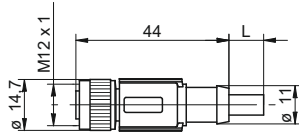
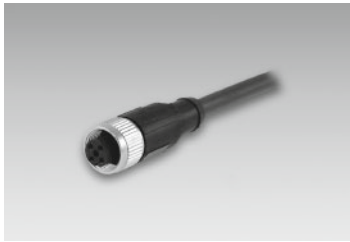
order reference	
ESG 34AH0200	Connector M12, 4 pin, straight, 2 m
ESG 34AH0500	Connector M12, 4 pin, straight, 5 m
ESG 34AH1000	Connector M12, 4 pin, straight, 10 m
ESG 34CH0200	Connector M12, 5 pin, straight, 2 m
ESG 34CH0500	Connector M12, 5 pin, straight, 5 m
ESG 34SH0200	Connector M12, 3 pin, straight, 2 m
ESG 34SH0500	Connector M12, 3 pin, straight, 5 m
ESG 34SH1000	Connector M12, 3 pin, straight, 10 m

- Connector unshielded
- 3, 4 and 5 pin versions
- Cable coating PUR
- Halogen-free
- Suitable for flexible cable carriers
- UL listed, number E315836

Connectors and mating connectors

Accessories

**ESG 34G** - Connector M12 straight, shielded

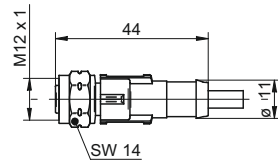


- Connector shielded, screen connected with cap nut
- 4, 5 and 8 pin versions
- Cable coating PUR
- Halogen-free
- Suitable for flexible cable carriers
- UL listed, number E315836

**order reference**

ESG 34AH0200G	Connector M12, 4 pin, straight, 2 m, shielded
ESG 34AH0500G	Connector M12, 4 pin, straight, 5 m, shielded
ESG 34AH1000G	Connector M12, 4 pin, straight, 10 m, shielded
ESG 34CH0200G	Connector M12, 5 pin, straight, 2 m, shielded
ESG 34CH0500G	Connector M12, 5 pin, straight, 5 m, shielded
ESG 34CH1000G	Connector M12, 5 pin, straight, 10 m, shielded
ESG 34FH0200G	Connector M12, 8 pin, straight, 2 m, shielded
ESG 34FH0500G	Connector M12, 8 pin, straight, 5 m, shielded
ESG 34FH1000G	Connector M12, 8 pin, straight, 10 m, shielded

**ESG 34F** - Connector M12 straight, PVC/V4A

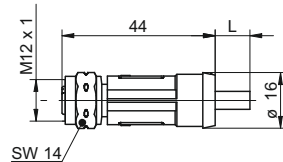


- Connector unshielded
- 4 pin version
- Cable coating PVC
- Cap nut material in stainless steel V4A
- Ecolab certified and FDA conform
- UL listed, number E315836

**order reference**

ESG 34AF0200	Connector M12, 4 pin, straight, 2 m, V4A-PVC
ESG 34AF0500	Connector M12, 4 pin, straight, 5 m, V4A-PVC
ESG 34AF1000	Connector M12, 4 pin, straight, 10 m, V4A-PVC
ESG 34AF2500	Connector M12, 4 pin, straight, 25 m, V4A-PVC

**ESG 34 (Outdoor)** - Connector M12 straight, PE-X cable

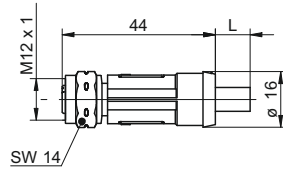


- For outdoor applications
- 4 pin versions unshielded
- Cable coating PE-X
- Halogen-free
- Cap nut material in high grade steel (1.4401)

**order reference**

ESG 34AE0500	Connector M12, 4 pin, straight, 2 m
ESG 34AE1000	Connector M12, 4 pin, straight, 10 m

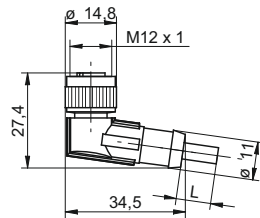
**ESG 34G (Outdoor)** - Connector M12 straight, 4 pin shielded; PE-X cable



order reference	
ESG 34AE0500G	Connector M12, 12 pin, straight, 5 m, shielded
ESG 34AE1000G	Connector M12, 12 pin, straight, 10 m, shielded

- For outdoor applications
- Cable coating PE-X
- Halogen-free
- Cap nut material in high grade steel (1.4401)

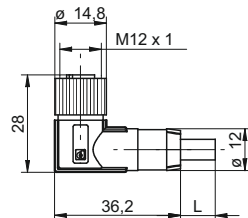
**ESW 33** - Connector M12 angular



order reference	
ESW 33AH0200	Connector M12, 4 pin, angular, 2 m
ESW 33AH0500	Connector M12, 4 pin, angular, 5 m
ESW 33AH1000	Connector M12, 4 pin, angular, 10 m
ESW 33CH0200	Connector M12, 5 pin, angular, 2 m
ESW 33CH0500	Connector M12, 5 pin, angular, 5 m
ESW 33SH0200	Connector M12, 3 pin, angular, 2 m
ESW 33SH0500	Connector M12, 3 pin, angular, 5 m
ESW 33SH1000	Connector M12, 3 pin, angular, 10 m

- Connector unshielded
- 3, 4 and 5 pin versions
- Cable coating PUR
- Halogen-free
- Suitable for flexible cable carriers
- UL listed, number E315836

**ESW 33G** - Connector M12 angular, shielded



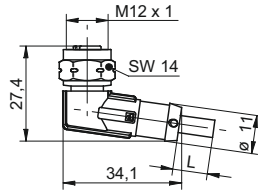
order reference	
ESW 33AH0200G	Connector M12, 4 pin, angular, 2 m, shielded
ESW 33AH0500G	Connector M12, 4 pin, angular, 5 m, shielded
ESW 33AH1000G	Connector M12, 4 pin, angular, 10 m, shielded
ESW 33CH0500G	Connector M12, 5 pin, angular, 5 m, shielded
ESW 33FH0200G	Connector M12, 8 pin, angular, 2 m, shielded
ESW 33FH0500G	Connector M12, 8 pin, angular, 5 m, shielded
ESW 33FH1000G	Connector M12, 8 pin, angular, 10 m, shielded

- Connector shielded, screen connected with cap nut
- 4, 5 and 8 pin versions
- Cable coating PUR
- Halogen-free
- Suitable for flexible cable carriers
- UL listed, number E315836

Connectors and mating connectors

Accessories

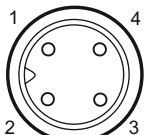
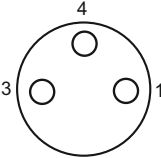
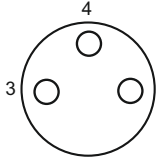
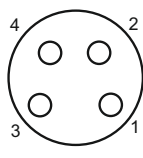
## ESW 33F - Connector M12 angular, PVC/V4A

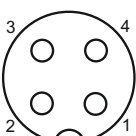
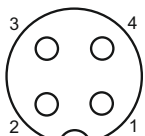
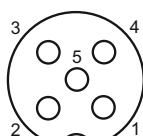


### order reference

ESW 33AF0200	Connector M12, 4 pin, angular, 2 m, V4A-PVC
ESW 33AF0500	Connector M12, 4 pin, angular, 5 m, V4A-PVC
ESW 33AF2500	Connector M12, 4 pin, angular, 25 m, V4A-PVC

- Connector unshielded
- 4 pin version
- Cable coating PVC
- Cap nut material in stainless steel V4A
- Ecolab certified and FDA conform
- UL listed, number E315836

M5 3 pin	Snap-in 3 pin	M8 3 pin	M8 4 pin
 <p>1 = BN 2 = n.c. 3 = BU 4 = BK</p>	 <p>1 = BN 3 = BU 4 = BK</p>	 <p>1 = BN 3 = BU 4 = BK</p>	 <p>1 = BN 2 = WH 3 = BU 4 = BK</p>
<p>ESG 05 ESW 05</p>	<p>ESG 09 ESW 08</p>	<p>ES 21 ES 22 ESG 32S ESW 31S</p>	<p>ES 21A ES 22A ESG 32A ESG 32G ESW 31A ESW 31G</p>

M12 3 pin	M12 4 pin	M12 5 pin
 <p>1 = BN 2 = n.c. 3 = BU 4 = WH</p>	 <p>1 = BN (+Vs) 2 = WH (output) 3 = BU (0V) 4 = BK (output)</p>	 <p>1 = BN 2 = WH 3 = BU 4 = BK 5 = GY</p>
<p>ESG 34S ESW 33S</p>	<p>ES 14 ES 18 ESG 34A ESG 34AF ESG 34 (Outdoor) ESW 33A ESW 33AF</p>	<p>ES 14C ES 18C ESG 34C ESW 33C</p>

**Note**

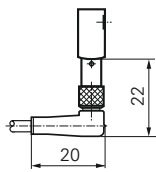
**Halogen-free cables**

Sheath material	PUR black gray
Special properties	suitable for drag chains silicone-free free from substances that might impair surface wetting in the coating process
Free of halogens	according to DIN VDE 0472 part 815
Flame resistance	according to UL-Style 20549
Oil resistance	according to DIN VDE 60811-2-1

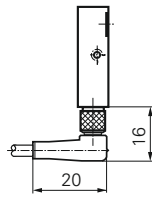
# Installation dimensions

## Connectors M5

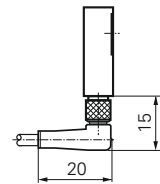
Dimension 06



Dimension 08

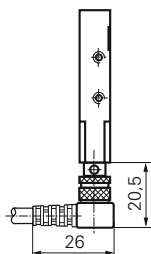


Dimension 12

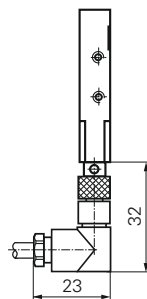


## Connectors M8

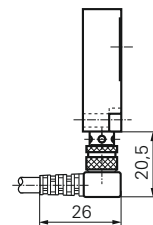
Dimension 08



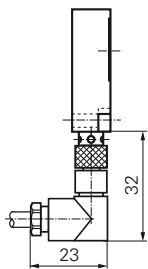
Dimension 08



Dimension 20

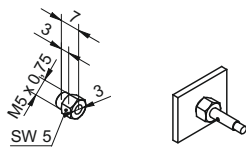


Dimension 20





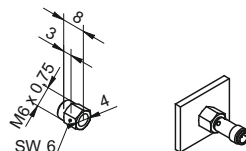
**Clamping nut for sensors  $\varnothing$  3 mm**



**order reference**

10137021 Clamping nut for sensors  $\varnothing$  3 mm

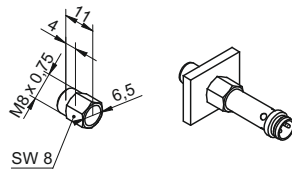
**Clamping nut for sensors  $\varnothing$  4 mm**



**order reference**

10119345 Clamping nut for sensors  $\varnothing$  4 mm

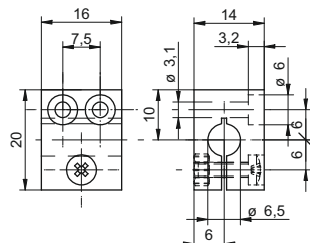
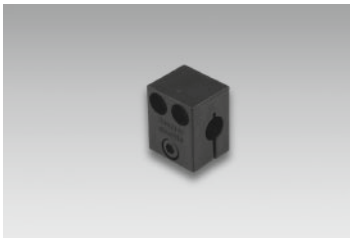
**Clamping nut for sensors  $\varnothing$  6,5 mm**



**order reference**

10117742 Clamping nut for sensors  $\varnothing$  6,5 mm

**Mounting bracket 6,5 mm**



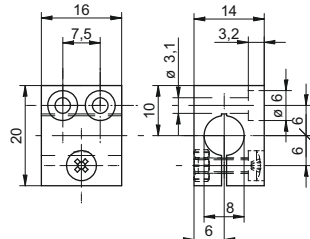
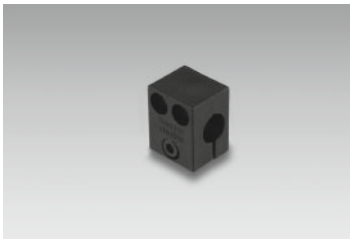
- Material: Plastic (PA6)

For sensors with  $\varnothing$  6,5 mm

**order reference**

10109474 Mounting bracket for sensors  $\varnothing$  6,5 mm

**Mounting bracket 8 mm**



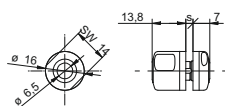
- Material: Plastic (PA6)

For sensors with  $\varnothing$  8 mm

**order reference**

10109475 Mounting bracket for sensors  $\varnothing$  8 mm

**Mounting HI06-1H for sensors in hygienic design  $\varnothing$  6,5 mm**



S = 1.5 ... 6.5 mm

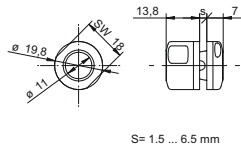
- Material: Stainless steel V4A
- EHEDG-certified

For use with inductive sensors 6,5 mm

**order reference**

HI06-1H Mounting for sensors in hygienic design  $\varnothing$  6,5 mm

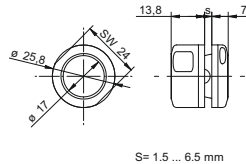
Mounting HI11-1H for sensors in hygienic design Ø 11 mm



- Material: Stainless steel V4A
  - EHEDG-certified
- For use with inductive sensors 11 mm

**order reference**  
 HI11-1H Mounting for sensors in hygienic design Ø 11 mm

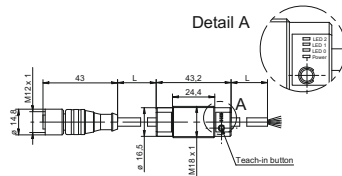
Mounting HI17-1H for sensors in hygienic design Ø 17 mm



- Material: Stainless steel V4A
  - EHEDG-certified
- For use with inductive sensors 17 mm and photoelectric sensors in hygienic design

**order reference**  
 HI17-1H Mounting for sensors in hygienic design Ø 17 mm

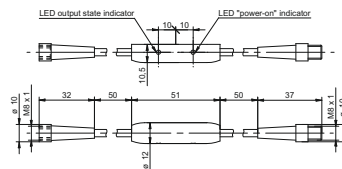
Converter 3-point



- Converter with three teachable outputs
- For use with all distance measuring inductive and ultrasonic sensors

**order reference**  
 10163979 Converter 3-point (M12)

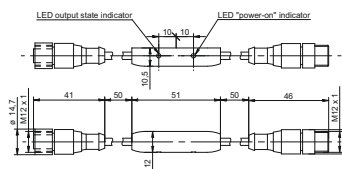
PNP to NPN Converter M8



- PNP/NPN Converter
- For frequencies up to max. 5 kHz
- For connector M8 - 3 pins

**order reference**  
 10161959 Converter PNP/NPN - M8 x 1

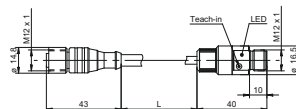
PNP to NPN Converter M12



- PNP/NPN Converter
- For frequencies up to max. 5 kHz
- For connector M12 - 3 pins

**order reference**  
 10161958 Converter PNP/NPN - M12 x 1

Teach-in Adapter M12



**order reference**  
 10141584 Teach-in Adapter M12

**Test unit for sensors analog & digital**

- Output via display (V or mA) or LED (PNP/NPN)
- Teach-in of sensors with integrated Teach- button
- Connection for plug in power supply (available as accessory)

Test- and configuration device for analog and digital PNP/NPN sensors with 18 VDC supply voltage

**order reference**

11084376 Test unit for sensors analog & digital

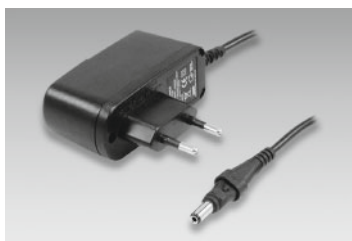
**Test unit for sensors digital**

- LED (red/green) for digital PNP/NPN signals
- Teach-in of sensors with integrated Teach- button
- Connection for plug in power supply (available as accessory)

Test- and configuration device for digital PNP/NPN sensors with 18 VDC supply voltage

**order reference**

11084377 Test unit for sensors digital

**Power supply for sensor test unit**

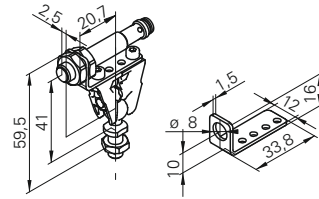
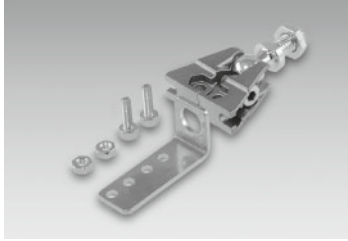
- Input 100-230 VAC
- Output 24 V/0,3 A
- Euro 2 pin plug connector

Protects the batteries of the sensor tester analog & digital for extended lifetime

**order reference**

11087165 Test unit for sensors

**Sensofix-Mounting kit for sensors series 08 round**



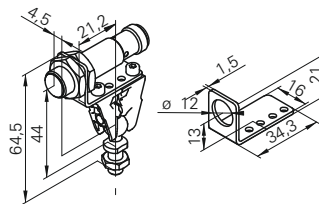
- Clamps made of stainless steel
- Ball pivots made of galvanized steel
- Mounting panel made of stainless steel

For use with all sensors in M8 housing

**order reference**

10151719 Sensofix series 08

**Sensofix-Mounting kit for sensors series 12 round**



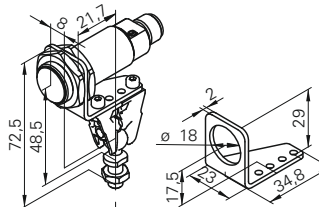
- Clamps made of stainless steel
- Ball pivots made of galvanized steel
- Mounting panel made of stainless steel

For use with all sensors in M12 housing

**order reference**

10151720 Sensofix series 12 round

**Sensofix-Mounting kit for sensors series 18 round**



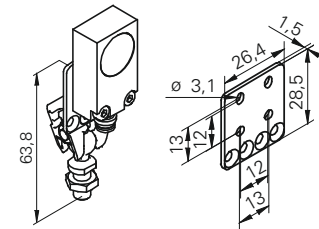
- Clamps made of stainless steel
- Ball pivots made of galvanized steel
- Mounting panel made of stainless steel

For use with all sensors in M18 housing

**order reference**

10151658 Sensofix series 18

**Sensofix-Mounting kit for sensors series 18/20**



- Clamps made of stainless steel
- Ball pivots made of galvanized steel
- Mounting panel made of stainless steel

For use with inductive sensors series 18/20 in rectangular designs

**order reference**

10152385 Sensofix series 18/20 inductive rectangular

order reference	page	order reference	page	order reference	page
<b>E</b>					
ES 14 PG7	182	ESW 31SH1000	181	IFFM 04P1501/O1L	117
ES 14C PG7	182	ESW 33AF0200	185	IFFM 04P3501/O1L	117
ES 18 PG7	182	ESW 33AF0500	185	IFFM 06N15A1/O1L	119
ES 18C PG7	182	ESW 33AF2500	185	IFFM 06N15A3/O1L	118
ES 21	179	ESW 33AH0200	184	IFFM 06N15A3/O1S05L	118
ES 21A	179	ESW 33AH0200G	184	IFFM 06N35A1/O1L	119
ES 22	180	ESW 33AH0500	184	IFFM 06N35A3/O1L	118
ES 22A	180	ESW 33AH0500G	184	IFFM 06N35A3/O1S05L	118
ESG 05AP0200G	178	ESW 33AH1000	184	IFFM 06P15A1/O1L	119
ESG 05SP0200	178	ESW 33AH1000G	184	IFFM 06P15A3/O1L	118
ESG 05SP0500	178	ESW 33CH0200	184	IFFM 06P15A3/O1S05L	118
ESG 05SP1000	178	ESW 33CH0500	184	IFFM 06P35A1/O1L	119
ESG 09SH0200	179	ESW 33CH0500G	184	IFFM 06P35A3/O1L	118
ESG 09SH0500	179	ESW 33FH0200G	184	IFFM 06P35A3/O1S05L	118
ESG 09SH1000	179	ESW 33FH0500G	184	IFFM 08N1701/O1L	123
ESG 32AH0200	180, 186	ESW 33FH1000G	184	IFFM 08N1701/O1S35L	125
ESG 32AH0200G	181	ESW 33SH0200	184	IFFM 08N1702/O1L	122
ESG 32AH0500	180, 186	ESW 33SH0500	184	IFFM 08N1703/O1L	121
ESG 32AH0500G	181	ESW 33SH1000	184	IFFM 08N1703/O2S35L	124
ESG 32AH1000	180, 186			IFFM 08N17A1/O1S35L	123
ESG 32AH1000G	181	<b>H</b>		IFFM 08N17A3/O1S35L	122
ESG 32SF0500	180	HI06-1H	188	IFFM 08N17A5/O1S35L	121
ESG 32SF1000	180	HI11-1H	189	IFFM 08N17A6/KS35L	120
ESG 32SH0200	180, 186	HI17-1H	189	IFFM 08N17A6/L	120
ESG 32SH0500	180, 186			IFFM 08N3701/O1L	123
ESG 32SH0500G	181	<b>I</b>		IFFM 08N3701/O1S35L	125
ESG 32SH1000	180, 186	IARM 08P1503/S35L	174	IFFM 08N3702/O1L	122
ESG 32SH1000G	181	IARM 12N15A3/S35L	175	IFFM 08N3703/O1L	121
ESG 32SH1000G	181	IARM 12P15A3/S35L	175	IFFM 08N3703/O2S35L	124
ESG 34AE0500	183	IFBR 06N13T1/S14L-9	134	IFFM 08N37A1/O1S35L	123
ESG 34AE0500G	184	IFBR 06N33T1/S14L-9	134	IFFM 08N37A3/O1S35L	122
ESG 34AE1000	183	IFBR 06P13T1/S14L-9	134	IFFM 08N37A5/O1S35L	121
ESG 34AE1000G	184	IFBR 06P33T1/S14L-9	134	IFFM 08N37A6/KS35L	120
ESG 34AF0200	183	IFBR 11N13T1/L-9	136	IFFM 08N37A6/L	120
ESG 34AF0500	183	IFBR 11N13T1/S14L-9	136	IFFM 08P1701/O1L	123
ESG 34AF1000	183	IFBR 11N17T1/L-9	135	IFFM 08P1701/O1S35L	125
ESG 34AF2500	183	IFBR 11N17T1/S14L-9	135	IFFM 08P1702/O1L	122
ESG 34AH0200	182	IFBR 11N33T1/L-9	136	IFFM 08P1703/O1L	121
ESG 34AH0200G	183	IFBR 11N33T1/S14L-9	136	IFFM 08P1703/O2S35L	124
ESG 34AH0500	182	IFBR 11N37T1/L-9	135	IFFM 08P17A1/O1S35L	123
ESG 34AH0500G	183	IFBR 11N37T1/S14L-9	135	IFFM 08P17A3/O1S35L	122
ESG 34AH1000	182	IFBR 11P13T1/L-9	136	IFFM 08P17A5/O1S35L	121
ESG 34AH1000G	183	IFBR 11P13T1/S14L-9	136	IFFM 08P17A6/KS35L	120
ESG 34CH0200	182	IFBR 11P17T1/L-9	135	IFFM 08P17A6/L	120
ESG 34CH0200G	183	IFBR 11P17T1/S14L-9	135	IFFM 08P3701/O1L	123
ESG 34CH0500	182	IFBR 11P33T1/L-9	136	IFFM 08P3701/O1S35L	125
ESG 34CH0500G	183	IFBR 11P33T1/S14L-9	136	IFFM 08P3702/O1L	122
ESG 34CH1000G	183	IFBR 11P37T1/L-9	135	IFFM 08P3703/O1L	121
ESG 34FH0200G	183	IFBR 11P37T1/S14L-9	135	IFFM 08P3703/O2S35L	124
ESG 34FH0500G	183	IFBR 17N13T1/L-9	138	IFFM 08P37A1/O1S35L	123
ESG 34FH1000G	183	IFBR 17N13T1/S14L-9	138	IFFM 08P37A3/O1S35L	122
ESG 34SH0200	182	IFBR 17N17T1/L-9	137	IFFM 08P37A5/O1S35L	121
ESG 34SH0500	182	IFBR 17N17T1/S14L-9	137	IFFM 08P37A6/KS35L	120
ESG 34SH1000	182	IFBR 17N33T1/L-9	138	IFFM 08P37A6/L	120
ESW 05SP0200	178	IFBR 17N33T1/S14L-9	138	IFFM 12N17A3/S05L	126
ESW 05SP0500	178	IFBR 17N37T1/L-9	137	IFFM 12N37A3/S05L	126
ESW 08SH0200	179	IFBR 17N37T1/S14L-9	137	IFFM 12P17A3/S05L	126
ESW 08SH0500	179	IFBR 17P13T1/L-9	138	IFFM 12P37A3/S05L	126
ESW 31AH0200	181	IFBR 17P13T1/S14L-9	138	IFFM 20N1501/S35L	127
ESW 31AH0200G	181	IFBR 17P17T1/L-9	137	IFFM 20N17A3/S35L	128
ESW 31AH0500	181	IFBR 17P17T1/S14L-9	137	IFFM 20N3501/S35L	127
ESW 31AH0500G	181	IFBR 17P33T1/L-9	138	IFFM 20N37A3/S35L	128
ESW 31AH1000	181	IFBR 17P33T1/S14L-9	138	IFFM 20P1501/S35L	127
ESW 31AH1000G	181	IFBR 17P37T1/L-9	137	IFFM 20P17A3/S35L	128
ESW 31SH0200	181	IFBR 17P37T1/S14L-9	137	IFFM 20P3501/S35L	127
ESW 31SH0200G	181	IFF 08.82.05	162	IFFM 20P37A3/S35L	128
ESW 31SH0500	181	IFFK 10E9101	163	IFR 04.82.05	154
ESW 31SH0500G	181	IFFM 04N1501/O1L	117	IFR 05.82.05	154
		IFFM 04N3501/O1L	117	IFR 10.82.01	157

order reference	page	order reference	page	order reference	page
IFR 10.82.05	157	IFRM 04N17A3/S05L	75	IFRM 05N35A3/S35L	81
IFRD 06N17A1/S35L	150	IFRM 04N17A3/S35L	77	IFRM 05N35A5/Q	78
IFRD 06N17T1/S35	150	IFRM 04N35A1/KS35PL	73	IFRM 05N37A1/PL	83
IFRD 06N37A1/S35L	150	IFRM 04N35A1/L	73	IFRM 05N37A1/S35L	84
IFRD 06N37T1/S35	150	IFRM 04N35A3/KS35PL	72	IFRM 05N37A3/PL	82
IFRD 06P17A1/S35L	150	IFRM 04N35A3/L	72	IFRM 05N37A3/S05L	82
IFRD 06P17T1/S35	150	IFRM 04N35A3/S05L	72	IFRM 05N37A3/S35L	84
IFRD 06P37A1/S35L	150	IFRM 04N35A3/S35L	74	IFRM 05P15A1/KS35PL	80
IFRD 06P37T1/S35	150	IFRM 04N35A5/Q	71	IFRM 05P15A1/L	80
IFRD 08N17A1/S35L	151	IFRM 04N35B1/KS35PL	70	IFRM 05P15A1/S35L	81
IFRD 08N17T1/S35	151	IFRM 04N35B1/L	70	IFRM 05P15A3/KS35PL	79
IFRD 08N37A1/S35L	151	IFRM 04N37A1/KS35PL	76	IFRM 05P15A3/L	79
IFRD 08N37T1/S35	151	IFRM 04N37A1/PL	76	IFRM 05P15A3/S05L	79
IFRD 08P17A1/S35L	151	IFRM 04N37A1/S35L	77	IFRM 05P15A3/S35L	81
IFRD 08P17T1/S35	151	IFRM 04N37A3/KS35PL	75	IFRM 05P15A5/Q	78
IFRD 08P37A1/S35L	151	IFRM 04N37A3/PL	75	IFRM 05P17A1/PL	83
IFRD 08P37T1/S35	151	IFRM 04N37A3/S05L	75	IFRM 05P17A1/S35L	84
IFRD 12N17A3/S14L	152	IFRM 04N37A3/S35L	77	IFRM 05P17A3/PL	82
IFRD 12N17T3/S14	152	IFRM 04P15A1/KS35PL	73	IFRM 05P17A3/S05L	82
IFRD 12N37A3/S14L	152	IFRM 04P15A1/L	73	IFRM 05P17A3/S35L	84
IFRD 12N37T3/S14	152	IFRM 04P15A1/S35L	74	IFRM 05P35A1/KS35PL	80
IFRD 12P17A3/S14L	152	IFRM 04P15A3/KS35PL	72	IFRM 05P35A1/L	80
IFRD 12P17T3/S14	152	IFRM 04P15A3/L	72	IFRM 05P35A1/S35L	81
IFRD 12P37A3/S14L	152	IFRM 04P15A3/S05L	72	IFRM 05P35A3/KS35PL	79
IFRD 12P37T3/S14	152	IFRM 04P15A3/S35L	74	IFRM 05P35A3/L	79
IFRD 18N17A3/S14L	153	IFRM 04P15A5/Q	71	IFRM 05P35A3/S05L	79
IFRD 18N17T3/S14	153	IFRM 04P15B1/KS35PL	70	IFRM 05P35A3/S35L	81
IFRD 18N37A3/S14L	153	IFRM 04P15B1/L	70	IFRM 05P35A5/Q	78
IFRD 18N37T3/S14	153	IFRM 04P17A1/KS35PL	76	IFRM 05P37A1/PL	83
IFRD 18P17A3/S14L	153	IFRM 04P17A1/PL	76	IFRM 05P37A1/S35L	84
IFRD 18P17T3/S14	153	IFRM 04P17A1/S35L	77	IFRM 05P37A3/PL	82
IFRD 18P37A3/S14L	153	IFRM 04P17A3/KS35PL	75	IFRM 05P37A3/S05L	82
IFRD 18P37T3/S14	153	IFRM 04P17A3/PL	75	IFRM 05P37A3/S35L	84
IFRH 08P1501/L	170	IFRM 04P17A3/S05L	75	IFRM 06N13G1/L	90
IFRH 08P3501/L	170	IFRM 04P17A3/S35L	77	IFRM 06N13G1/S35L	90
IFRH 12P1501/L	171	IFRM 04P35A1/KS35PL	73	IFRM 06N1701/KS35L	86
IFRH 12P3501/L	171	IFRM 04P35A1/L	73	IFRM 06N1701/L	86
IFRH 18P1501/L	171	IFRM 04P35A1/S35L	74	IFRM 06N1707	167
IFRH 18P3501/L	171	IFRM 04P35A3/KS35PL	72	IFRM 06N1713/KS35L	85
IFRM 03N1501/KS35L	69	IFRM 04P35A3/L	72	IFRM 06N1713/L	85
IFRM 03N1501/L	69	IFRM 04P35A3/S05L	72	IFRM 06N17A1/KS35L	87
IFRM 03N1503/Q	69	IFRM 04P35A3/S35L	74	IFRM 06N17A1/L	87
IFRM 03N1505/CS35L	68	IFRM 04P35A5/Q	71	IFRM 06N17A1/S35L	87
IFRM 03N3501/KS35L	69	IFRM 04P35B1/KS35PL	70	IFRM 06N17A3/S35L	86
IFRM 03N3501/L	69	IFRM 04P35B1/L	70	IFRM 06N17A4/L	88
IFRM 03N3503/Q	69	IFRM 04P37A1/KS35PL	76	IFRM 06N17A4/S35L	88
IFRM 03N3505/CS35L	68	IFRM 04P37A1/PL	76	IFRM 06N17A5/S35L	85
IFRM 03P1501/KS35L	69	IFRM 04P37A1/S35L	77	IFRM 06N17G1/L	89
IFRM 03P1501/L	69	IFRM 04P37A3/KS35PL	75	IFRM 06N17G1/S35L	89
IFRM 03P1503/Q	69	IFRM 04P37A3/PL	75	IFRM 06N33G1/L	90
IFRM 03P1505/CS35L	68	IFRM 04P37A3/S05L	75	IFRM 06N33G1/S35L	90
IFRM 03P3501/KS35L	69	IFRM 04P37A3/S35L	77	IFRM 06N3701/KS35L	86
IFRM 03P3501/L	69	IFRM 05N15A1/KS35PL	80	IFRM 06N3701/L	86
IFRM 03P3503/Q	69	IFRM 05N15A1/L	80	IFRM 06N3713/KS35L	85
IFRM 03P3505/CS35L	68	IFRM 05N15A3/KS35PL	79	IFRM 06N3713/L	85
IFRM 04N15A1/KS35PL	73	IFRM 05N15A3/L	79	IFRM 06N37A1/KS35L	87
IFRM 04N15A1/L	73	IFRM 05N15A3/S05L	79	IFRM 06N37A1/L	87
IFRM 04N15A3/KS35PL	72	IFRM 05N15A3/S35L	81	IFRM 06N37A1/S35L	87
IFRM 04N15A3/L	72	IFRM 05N15A5/Q	78	IFRM 06N37A3/S35L	86
IFRM 04N15A3/S05L	72	IFRM 05N17A1/PL	83	IFRM 06N37A4/L	88
IFRM 04N15A3/S35L	74	IFRM 05N17A1/S35L	84	IFRM 06N37A4/S35L	88
IFRM 04N15A5/Q	71	IFRM 05N17A3/PL	82	IFRM 06N37A5/S35L	85
IFRM 04N15B1/KS35PL	70	IFRM 05N17A3/S05L	82	IFRM 06N37G1/L	89
IFRM 04N15B1/L	70	IFRM 05N17A3/S35L	84	IFRM 06N37G1/S35L	89
IFRM 04N17A1/KS35PL	76	IFRM 05N35A1/KS35PL	80	IFRM 06P13G1/L	90
IFRM 04N17A1/PL	76	IFRM 05N35A1/L	80	IFRM 06P13G1/S35L	90
IFRM 04N17A1/S35L	77	IFRM 05N35A3/KS35PL	79	IFRM 06P1701/KS35L	86
IFRM 04N17A3/KS35PL	75	IFRM 05N35A3/L	79	IFRM 06P1701/L	86
IFRM 04N17A3/PL	75	IFRM 05N35A3/S05L	79	IFRM 06P1707	167

order reference	page	order reference	page	order reference	page
IFRM 06P1713/KS35L	85	IFRM 08P1703/S14L	95	IFRM 12N37G1/L	103
IFRM 06P1713/L	85	IFRM 08P1707	168	IFRM 12N37G1/S14L	103
IFRM 06P17A1/KS35L	87	IFRM 08P1713/KS35L	91	IFRM 12N37G3/L	102
IFRM 06P17A1/L	87	IFRM 08P1713/L	91	IFRM 12N37G3/S14L	102
IFRM 06P17A1/S35L	87	IFRM 08P17A1/KS35L	93	IFRM 12N37X1/L	158
IFRM 06P17A3/S35L	86	IFRM 08P17A1/L	93	IFRM 12N37X2/L	159
IFRM 06P17A4/KS35L	88	IFRM 08P17A1/S35L	93	IFRM 12P13G1/L	105
IFRM 06P17A4/L	88	IFRM 08P17A3/S35L	92	IFRM 12P13G1/S14L	105
IFRM 06P17A4/S35L	88	IFRM 08P17A4/KS35L	94	IFRM 12P13G3/L	104
IFRM 06P17A5/S35L	85	IFRM 08P17A4/L	94	IFRM 12P13G3/S14L	104
IFRM 06P17G1/L	89	IFRM 08P17A4/S35L	94	IFRM 12P13T1/PL	144
IFRM 06P17G1/S35L	89	IFRM 08P17A5/S35L	91	IFRM 12P13T1/S14L	144
IFRM 06P33G1/L	90	IFRM 08P17G1/L	96	IFRM 12P1701/L	98
IFRM 06P33G1/S35L	90	IFRM 08P17G1/S35L	96	IFRM 12P1701/S14L	99
IFRM 06P3701/KS35L	86	IFRM 08P17T4	169	IFRM 12P1701/S35L	101
IFRM 06P3701/L	86	IFRM 08P33G1/L	97	IFRM 12P1702/L	99
IFRM 06P3713/KS35L	85	IFRM 08P33G1/S35L	97	IFRM 12P1703/S14L	98
IFRM 06P3713/L	85	IFRM 08P3701/KS35L	92	IFRM 12P1704/L	100
IFRM 06P37A1/KS35L	87	IFRM 08P3701/L	92	IFRM 12P1704/S14L	100
IFRM 06P37A1/L	87	IFRM 08P3703/S14L	95	IFRM 12P1707	168
IFRM 06P37A1/S35L	87	IFRM 08P3713/KS35L	91	IFRM 12P17G1/L	103
IFRM 06P37A3/S35L	86	IFRM 08P3713/L	91	IFRM 12P17G1/S14L	103
IFRM 06P37A4/KS35L	88	IFRM 08P37A1/KS35L	93	IFRM 12P17G3/L	102
IFRM 06P37A4/L	88	IFRM 08P37A1/L	93	IFRM 12P17G3/S14L	102
IFRM 06P37A4/S35L	88	IFRM 08P37A1/S35L	93	IFRM 12P17X1/L	158
IFRM 06P37A5/S35L	85	IFRM 08P37A3/S35L	92	IFRM 12P17X2/L	159
IFRM 06P37G1/L	89	IFRM 08P37A4/KS35L	94	IFRM 12P33G1/L	105
IFRM 06P37G1/S35L	89	IFRM 08P37A4/L	94	IFRM 12P33G1/S14L	105
IFRM 06X9503/P	155	IFRM 08P37A4/S35L	94	IFRM 12P33G3/L	104
IFRM 06X9503	155	IFRM 08P37A5/S35L	91	IFRM 12P33G3/S14L	104
IFRM 08N13G1/L	97	IFRM 08P37G1/L	96	IFRM 12P33T1/PL	144
IFRM 08N13G1/S35L	97	IFRM 08P37G1/S35L	96	IFRM 12P33T1/S14L	144
IFRM 08N1701/KS35L	92	IFRM 08X9103	156	IFRM 12P3701/L	98
IFRM 08N1701/L	92	IFRM 08X9501/S35	156	IFRM 12P3701/S14L	99
IFRM 08N1703/S14L	95	IFRM 08X9503/S35	156	IFRM 12P3701/S35L	101
IFRM 08N1707	168	IFRM 08X9503	156	IFRM 12P3702/L	99
IFRM 08N1713/KS35L	91	IFRM 12N13G1/L	105	IFRM 12P3703/S14L	98
IFRM 08N1713/L	91	IFRM 12N13G1/S14L	105	IFRM 12P3704/L	100
IFRM 08N17A1/KS35L	93	IFRM 12N13G3/L	104	IFRM 12P3704/S14L	100
IFRM 08N17A1/L	93	IFRM 12N13G3/S14L	104	IFRM 12P37G1/L	103
IFRM 08N17A1/S35L	93	IFRM 12N13T1/PL	144	IFRM 12P37G1/S14L	103
IFRM 08N17A3/S35L	92	IFRM 12N13T1/S14L	144	IFRM 12P37G3/L	102
IFRM 08N17A4/KS35L	94	IFRM 12N1701/L	98	IFRM 12P37G3/S14L	102
IFRM 08N17A4/L	94	IFRM 12N1701/S14L	99	IFRM 12P37X1/L	158
IFRM 08N17A4/S35L	94	IFRM 12N1701/S35L	101	IFRM 12P37X2/L	159
IFRM 08N17A5/S35L	91	IFRM 12N1702/L	99	IFRM 12X9103	160
IFRM 08N17G1/L	96	IFRM 12N1703/S14L	98	IFRM 12X9503	160
IFRM 08N17G1/S35L	96	IFRM 12N1704/L	100	IFRM 18N13G1/L	114
IFRM 08N33G1/L	97	IFRM 12N1704/S14L	100	IFRM 18N13G1/S14L	114
IFRM 08N33G1/S35L	97	IFRM 12N1707	168	IFRM 18N13G3/L	113
IFRM 08N3701/KS35L	92	IFRM 12N17G1/L	103	IFRM 18N13G3/S14L	113
IFRM 08N3701/L	92	IFRM 12N17G1/S14L	103	IFRM 18N13T1/PL	148
IFRM 08N3703/S14L	95	IFRM 12N17G3/L	102	IFRM 18N13T1/S14L	148
IFRM 08N3713/KS35L	91	IFRM 12N17G3/S14L	102	IFRM 18N1701/S35L	108
IFRM 08N3713/L	91	IFRM 12N17X1/L	158	IFRM 18N1704/L	109
IFRM 08N37A1/KS35L	93	IFRM 12N17X2/L	159	IFRM 18N1704/S14L	109
IFRM 08N37A1/L	93	IFRM 12N33G1/L	105	IFRM 18N17A3/L	107
IFRM 08N37A1/S35L	93	IFRM 12N33G1/S14L	105	IFRM 18N17A3/S14L	107
IFRM 08N37A3/S35L	92	IFRM 12N33G3/L	104	IFRM 18N17A5/L	106
IFRM 08N37A4/KS35L	94	IFRM 12N33G3/S14L	104	IFRM 18N17A5/S14L	106
IFRM 08N37A4/L	94	IFRM 12N33T1/PL	144	IFRM 18N17G1/L	112
IFRM 08N37A4/S35L	94	IFRM 12N33T1/S14L	144	IFRM 18N17G1/S14L	112
IFRM 08N37A5/S35L	91	IFRM 12N3701/L	98	IFRM 18N17G3/L	111
IFRM 08N37G1/L	96	IFRM 12N3701/S14L	99	IFRM 18N17G3/S14L	111
IFRM 08N37G1/S35L	96	IFRM 12N3701/S35L	101	IFRM 18N17M1/PL	146
IFRM 08P13G1/L	97	IFRM 12N3702/L	99	IFRM 18N17M1/S14L	146
IFRM 08P13G1/S35L	97	IFRM 12N3703/S14L	98	IFRM 18N33G1/L	114
IFRM 08P1701/KS35L	92	IFRM 12N3704/L	100	IFRM 18N33G1/S14L	114
IFRM 08P1701/L	92	IFRM 12N3704/S14L	100	IFRM 18N33G3/L	113

Quick reference list

Inductive sensors

order reference	page	order reference	page	order reference	page
IFRM 18N33G3/S14L	113	IFRR 08P13T1/S14L-9	139	IWFM 20U9501/S35	57
IFRM 18N33T1/PL	148	IFRR 08P33T1/S14L-9	139	IWFM 20U9503/S35	57
IFRM 18N33T1/S14L	148	IFRR 12N13T1/L-9	141	IWFM 20U9509/KS35AP	58
IFRM 18N3701/S35L	108	IFRR 12N13T1/PL-9	145	IWRM 04U9701/S05	36
IFRM 18N37A3/L	107	IFRR 12N13T1/S14L-9	141, 145	IWRM 06I9501/S35	37
IFRM 18N37A3/S14L	107	IFRR 12N17T1/L-9	140	IWRM 06I9501	37
IFRM 18N37A5/L	106	IFRR 12N17T1/S14L-9	140	IWRM 06U9501/S35	37
IFRM 18N37A5/S14L	106	IFRR 12N33T1/L-9	141	IWRM 06U9501	37
IFRM 18N37G1/L	112	IFRR 12N33T1/PL-9	145	IWRM 08I9501/S35	38
IFRM 18N37G1/S14L	112	IFRR 12N33T1/S14L-9	141, 145	IWRM 08I9501	38
IFRM 18N37G3/L	111	IFRR 12N37T1/L-9	140	IWRM 08U9501/S35	38
IFRM 18N37G3/S14L	111	IFRR 12N37T1/S14L-9	140	IWRM 08U9501	38
IFRM 18N37M1/PL	146	IFRR 12P13T1/L-9	141	IWRM 12I9704/S14	39
IFRM 18N37M1/S14L	146	IFRR 12P13T1/PL-9	145	IWRM 12I9704/S14X	40
IFRM 18P1301/L	110	IFRR 12P13T1/S14L-9	141, 145	IWRM 12I9705/S14	39
IFRM 18P1301/S14L	110	IFRR 12P17T1/L-9	140	IWRM 12U9501	42
IFRM 18P13G1/L	114	IFRR 12P17T1/S14L-9	140	IWRM 12U9502	42
IFRM 18P13G1/S14L	114	IFRR 12P33T1/L-9	141	IWRM 12U9704/S14	39
IFRM 18P13G3/L	113	IFRR 12P33T1/PL-9	145	IWRM 12U9705/S14	39
IFRM 18P13G3/S14L	113	IFRR 12P33T1/S14L-9	141, 145	IWRM 12Z8704/S14C	43
IFRM 18P13T1/PL	148	IFRR 12P37T1/L-9	140	IWRM 18I9501	45
IFRM 18P13T1/S14L	148	IFRR 12P37T1/S14L-9	140	IWRM 18I9502	45
IFRM 18P1701/S35L	108	IFRR 18N13T1/L-9	143	IWRM 18I9511	45
IFRM 18P1704/L	109	IFRR 18N13T1/PL-9	149	IWRM 18I9704/S14	44
IFRM 18P1704/S14L	109	IFRR 18N13T1/S14L-9	143, 149	IWRM 18I97T4/S14	47
IFRM 18P17A3/L	107	IFRR 18N17M1/S14L-9	147	IWRM 18U9501	45
IFRM 18P17A3/S14L	107	IFRR 18N17T1/L-9	142	IWRM 18U9502	45
IFRM 18P17A5/L	106	IFRR 18N17T1/S14L-9	142	IWRM 18U9511	45
IFRM 18P17A5/S14L	106	IFRR 18N33T1/L-9	143	IWRM 18U9512	45
IFRM 18P17G1/L	112	IFRR 18N33T1/PL-9	149	IWRM 18U9704/S14	44
IFRM 18P17G1/S14L	112	IFRR 18N33T1/S14L-9	143, 149	IWRM 18Z8704/S14C	46
IFRM 18P17G3/L	111	IFRR 18N37M1/S14L-9	147	IWRM 30I9501	49
IFRM 18P17G3/S14L	111	IFRR 18N37T1/L-9	142	IWRM 30I9704/S14	50
IFRM 18P17M1/PL	146	IFRR 18N37T1/S14L-9	142	IWRM 30U9501	49
IFRM 18P17M1/S14L	146	IFRR 18P13T1/L-9	143	IWRM 30U9502	49
IFRM 18P33G1/L	114	IFRR 18P13T1/PL-9	149	IWRM 30U9704/S14	50
IFRM 18P33G1/S14L	114	IFRR 18P13T1/S14L-9	143, 149	IWRM 30Z8704/S14C	51
IFRM 18P33G3/L	113	IFRR 18P17M1/S14L-9	147	IWRR 18I97T4/S14	48
IFRM 18P33G3/S14L	113	IFRR 18P17T1/L-9	142		
IFRM 18P33T1/PL	148	IFRR 18P17T1/S14L-9	142		
IFRM 18P33T1/S14L	148	IFRR 18P33T1/L-9	143		
IFRM 18P3701/S35L	108	IFRR 18P33T1/PL-9	149		
IFRM 18P3704/S14L	109	IFRR 18P33T1/S14L-9	143, 149		
IFRM 18P37A3/L	107	IFRR 18P37M1/S14L-9	147		
IFRM 18P37A3/S14L	107	IFRR 18P37T1/L-9	142		
IFRM 18P37A5/L	106	IFRR 18P37T1/S14L-9	142		
IFRM 18P37A5/S14L	106	IFRW 12P1501/S14L	164		
IFRM 18P37G1/L	112	IFRW 18P1501/S14L	164		
IFRM 18P37G1/S14L	112	ILFK 12P1101/I03	173		
IFRM 18P37G3/L	111	ILFK 12P1101/I06	173		
IFRM 18P37G3/S14L	111	ILFK 12P1501/I03	173		
IFRM 18P37M1/PL	146	ILFK 12P1501/I06	173		
IFRM 18P37M1/S14L	146	IPRM 12I9504/S14	41		
IFRM 18X9103	161	IPRM 12I9505/S14	41		
IFRM 18X9503	161	IPRM 12I9506/S14	41		
IFRM 30P1101/S14L	116	IWFK 20Z8704/S35A	59		
IFRM 30P1201/L	116	IWFM 05U9701/S05	52		
IFRM 30P1501/S14L	115	IWFM 08U6501/KS35	53		
IFRM 30P1601/L	115	IWFM 08U6501	53		
IFRM 30P3101/S14L	116	IWFM 08U9501/KS35	53		
IFRM 30P3201/L	116	IWFM 08U9501	53		
IFRM 30P3501/S14L	115	IWFM 12L9504/S35A	54		
IFRM 30P3601/L	115	IWFM 12L9505/S35A	54		
IFRP 12P1501/S14	165	IWFM 12U9501/O1	55		
IFRP 12P1504/S14	165	IWFM 18L9504/S35A	56		
IFRP 16P1501/S14	166	IWFM 18L9505/S35A	56		
IFRP 18P1501/S14	166	IWFM 18U7504/S35A	56		
IFRR 08N13T1/S14L-9	139	IWFM 20I9501/S35	57		
IFRR 08N33T1/S14L-9	139	IWFM 20I9503/S35	57		